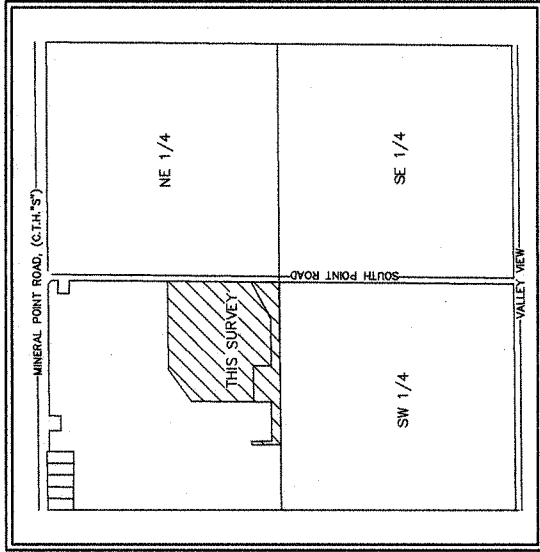


VICINITY MAP
NOT TO SCALE

SECTION 28, TOWNSHIP 07 NORTH, RANGE 08 EAST
CITY OF MADISON, DANE COUNTY, WISCONSIN



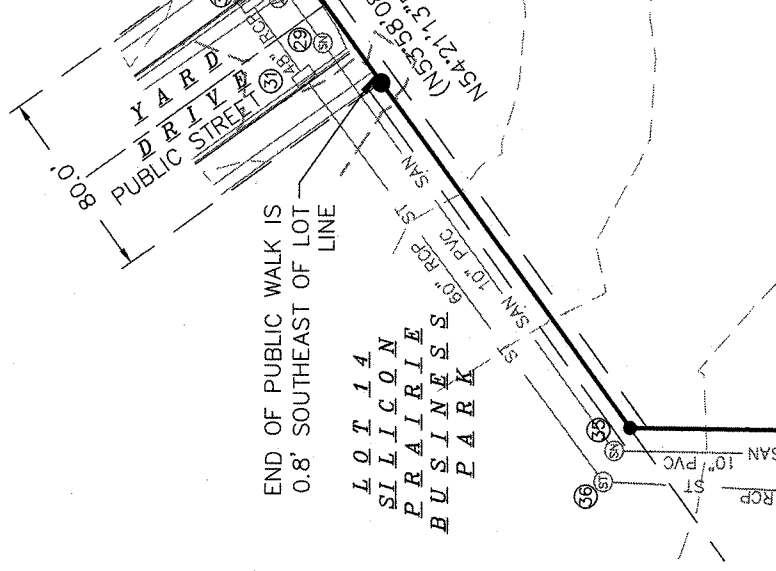
DIGGERS HOTLINE

Dial 811 or (800) 242-8511

www.DiggersHotline.com

LEGEND

- ⊙ MAG NAIL SET
- 3/4" SOLID IRON ROD FOUND
- ⊙ 1" IRON PIPE FOUND UNLESS NOTED
- X FOUND CHISELED "X" IN CONCRETE
- FOUND 1-1/4" SOLID IRON ROD
- 3/4" X 18" SOLID IRON RE-ROD SET, WT. 1.50 lbs./ft.
- +1066.0 SPOT ELEVATION
- OH — OVERHEAD UTILITY WIRE
- C — BURIED GAS LINE
- ⊙ AIR CONDITIONER
- ⊙ TV PEDESTAL
- ⊙ ELECTRIC PEDESTAL
- ⊙ UTILITY POLE
- ⊙ LIGHT POLE
- ⊙ GROUND LIGHT
- ⊙ TELEPHONE PEDESTAL
- ⊙ FIRE HYDRANT
- SIGN
- GUY WIRE



BSE2201 - 402 South Point Road

STORM SEWER AND SANITARY SEWER ELEVATION TABLE

NUMBER	RIM/TC	ELEVATION	ELEVATION	ELEVATION	ELEVATION	ELEVATION	ELEVATION	DESCRIPTION
1	1073.55	N	1066.99	W	1066.98	E	1066.99	8'x4' BOX
2	1073.47	S	1069.82					2'x3' CURB INLET
3	1074.18	E	1067.17	W	1067.16			8'x4' BOX
4	1074.03	E	1067.18	W	1067.17			8'x4' BOX
5	1073.77	N	1067.28	W	1067.27	S	1067.28	8'x4' BOX
6	1073.65	S	1069.82					2'x3' CURB INLET
7	1074.15	SW	1071.23					2'x3' CURB INLET
8	1074.15	N	1071.04	E	1071.07			2'x3' CURB INLET
9	1072.95	N	1070.33					2'x3' CURB INLET
10	1072.93	S	1070.43	E	1070.23			2'x3' CURB INLET
11	1073.22	E	1069.94	W	1069.95	S	1070.04	2'x3' CURB INLET
12	1073.31	E	1069.94	W	1070.01			2'x3' CURB INLET
13	1072.95	N	1069.99	S	1070.29			2'x3' CURB INLET
14	1072.94	N	1069.44	S	1069.63	E	1069.43	2'x3' CURB INLET
15	1077.61	E	1074.40	W	1074.43		1066.04	2'x3' YARD INLET
16	1078.09	E	1074.08	W	1074.26			2'x3' CURB INLET
17	1078.24	W	1073.78	S	1073.64			2'x3' CURB INLET
18	1094.92	E	1091.58					2'x3' CURB INLET
19	1095.02	N	1091.16	W	1091.19			2'x3' CURB INLET
20	1096.28	N	1090.53	E	1090.52	SW	1090.81	STORM SEWER MANHOLE
21	1068.77	N	1059.22	S	1059.23			SANITARY WET WELL (ELEVATION
22	1081.41	E	1062.54	W	1064.21	S	1062.53	SANITARY SEWER MANHOLE
23	1075.44	N	1061.79	S	1061.72			SANITARY SEWER MANHOLE